

Anti-PLXDC2 (4G3) rabbit mAb #2531

For Research Use Only. Not For Use In Diagnostic Procedures.

製品の概要

製品名	Anti-PLXDC2 (4G3) rabbit mAb (#2531)
フォーマット	未標識
種交差性	Human, Mouse
組成	10 mM HEPES (pH 7.5), 150 mM NaCl, 50% Glycerol, 0.1% BSA, 0.02% NaN ₃
精製方法	Ion exchange chromatography
アプリケーション	Western blotting, 1:1000-2000 Immunohistochemistry, 1:100 (4°C Overnight)
免疫原	HEK293 cells expressing human PLXDC2
ポリ/モノ	モノクローナル
クローン名	4G3
アイソタイプ	Rabbit IgG1k
保管条件	-20°C
別名称	TEM7R, 1200007L24Rik, 5430431D22Rik
Uniprot ID:	Q6UX71

ターゲット情報

Plexin domain containing protein 2 (PLXDC2), a cell surface transmembrane protein, is expressed in many tissues including haemotopoeitic stem cells, neural stem cells, pluripotent stem cells, and tumor cells. PLXDC2 may play an important role in neuronal growth, stem cell development, angiogenesis, and cancer cell growth.

PLXDC2 has been reported as a receptor for pigment epithelium derived factor (PEDF)⁽¹⁾ or as an activating ligand for adhesion G-protein coupled receptor D1 (Adgrd1)⁽²⁾. Also PLXDC2 was thought as a novel interaction partner and an entry receptor for rhesus monkey rhadinovirus (RRV)⁽³⁾. The gene expression level of PLXDC2 was elevated in the peripheral blood of stroke patients⁽⁴⁾ or in mouse bone marrow-derived macrophages in response to *Helicobacter pylori*⁽⁵⁾. The protease BACE1 (β-Site APP Cleaving Enzyme), a major drug target in Alzheimer's disease, cleaves the amyloid precursor protein (APP) as well as PLXDC2 as one of several other substrates⁽⁶⁾.

参照論文

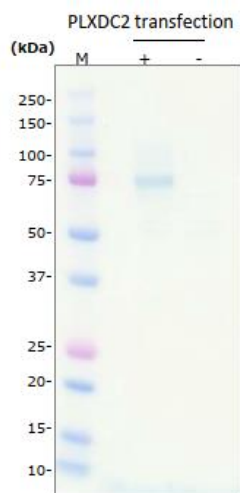
- (1) Cheng G et al. 2014 Elife. 3:e05401
- (2) Bianchi E et al 2021 Nat Commun. 2021 12(1):1251.
- (3) Großkopf AK et al. 2021 PLoS Pathog. 17(3):e1008979
- (4) O'Connell GC et al. 2017 Genom Data. Sep 14:47-52.
- (5) Tubau-Juni N, et al 2020 Sci. Rep. 10(1):11506.
- (6) Dislich B et al. 2015 Cell Proteomics. 10:2550-63

本抗体を使用した論文 (論文数 6)

1. Shimizu, H. et al. Improving the quality of a recombinant rabbit monoclonal antibody against PLXDC2 by optimizing transient expression conditions and purification method. Protein Expr. Purif. 146, 27–33 (2018).
2. Yamamoto N. et al. Expression Pattern of Plexin Domain Containing 2 in Human Hepatocellular Carcinoma. Monoclon Antib Immunodiagn Immunother. 39(2):57-60 (2020)
3. Hamada, Y. et al. Plexin domain containing protein 2 is more expressed within the invasive area of human colorectal cancer tissues. Human Cell (2021).
4. Tanaka Y. et al. Prospective isolation of mouse and human hematopoietic stem cells using Plexin domain containing 2. bioRxiv Sep 27: 2021.09.27.461900v1.doi: 10.1101/2021.09.27.461900. (2021)
5. Sakuma C. et al. Western blotting of native proteins from agarose gels Biotechniques .Apr 6 (2022).
6. Akuta T. et al. A new method to characterize conformation-specific antibody by a combination of agarose native gel electrophoresis and contact blotting. Antibodies 11(2), 36. (2022).

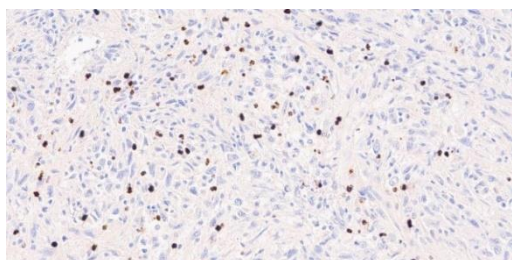
使用例

Western blotting



Western blot analysis of extracts from HEK293 cells, untransfected or transfected with human PLXDC2 gene, with anti-PLXDC2 (4G3) rabbit mAb at 1 µg/mL Cat. #2531.

Immunohistochemistry



Immunohistochemistry analysis of PLXDC2 using Anti-PLXDC2 (4G3) at 8 µg/mL staining PLXDC2 in human liver cancer tissue (Human Multi-tissue Tissue MicroArray (Cancer), NBP2-30263, Novus Biologicals)